

Titan-AL Series

15.6"/21.5"/23.8" IP69K Industrial Panel Computer

Features

- Intel Atom® x7-E3950 processor
- 15.6"/21.5"/23.8" projected capacitive touchscreen
- IP69K rating for high pressure hot water cleaning
- M12 waterproof connectors & cables
- Corrosion-resistant 316L stainless steel
- Flush front panel & sleek exterior to prevent water residue after cleaning
- VESA and pipe mount options

Preliminary



Introduction

The IP69K-rated Titan Panel Computer series is designed for use in monitoring and controlling production processes in industries obligated to meet high hygiene standards. The Titan series features power-efficient computing and up to 1080p high contrast display to present control schematics and graphical diagrams to systems operators. Encased in an IP69K, 316L stainless steel housing, the Titan series can withstand high pressure hot water cleaning, oxidative damage or other chemical reactions and is engineered to prevent water from remaining on the surface after cleaning with its flush front panel surface and the sleek rear chassis design. The pipe mounting option helps keep the workplace clean and neat by providing protection and allowing organization of cables. The Titan Panel Computer series is an ideal fit for food and beverage, pharmaceutical, automotive, and steel and metal industries.

Ordering Information

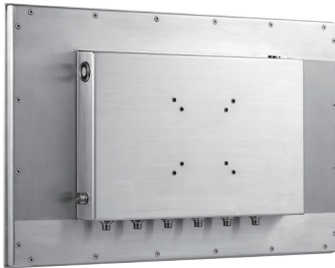
- **Titan-15WP-VESA-E3950**
15.6" Titan IP69K Touch Computer, VESA mount, PCAP, 4GB RAM, 128GB SSD
- **Titan-15WP-PIPE-E3950**
15.6" Titan IP69K Touch Computer, Pipe mount, PCAP, 4GB RAM, 128GB SSD
- **Titan-21WP- VESA -E3950**
21.5" Titan IP69K Touch Computer, VESA mount, PCAP, 4GB RAM, 128GB SSD
- **Titan-21WP- PIPE -E3950**
21.5" Titan IP69K Touch Computer, Pipe mount, PCAP, 4GB RAM, 128GB SSD
- **Titan-24WP- VESA -E3950**
23.8" Titan IP69K Touch Computer, VESA mount PCAP, 4GB RAM, 128GB SSD
- **Titan-24WP- PIPE -E3950**
23.8" Titan IP69K Touch Computer, Pipe mount, PCAP, 4GB RAM, 128GB SSD

Optional Accessories

- **Wi-Fi Kit**
IEEE 802.11 a/b/g/n/ac
- **Protection Caps**
Waterproof caps for M12 connectors
- **Wall Mount Kit**
Rotatable VESA wall mount kit for Titan-21/24WP-VESA-E3950

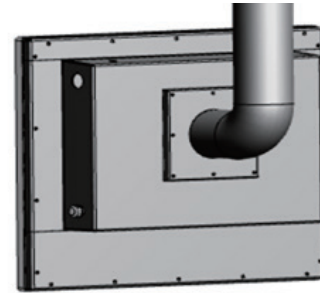
Highlights

VESA Mount

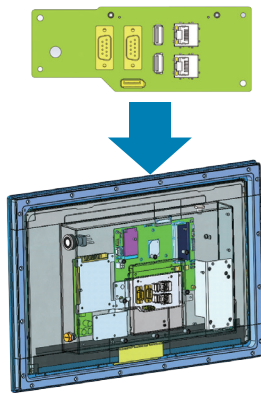


Titan-AL with M12 connectors

Pipe Mount



Stainless steel housing for full IP65/IP69K



Modular design allows customizable I/O and functionality by project basis. Contact your ADLINK representative for more information.



Water and dust proof is easy and reliable with standard cable connectors. No extra cost needed.

Specifications

Model Name	Titan-15W-AL	Titan-21W-AL	Titan-24W-AL
System			
Processor	Intel Atom® x7-E3950 Processor		
Memory	4GB DDR3L default (up to 8GB)		
Storage	1x 2.5" SATA drive bay		
Display Panel			
Display Size	15.6"	21.5"	23.8"
Display Resolution	1366 x 768	1920 x 1080	1920 x 1080
Luminance	400 nits (w/o touch)	400 nits (w/o touch)	400 nits (w/o touch)
Backlight MTBF (hrs)	50000	50000	50000
Contrast Ratio	500:1	1000:1	1000:1
Display View Angle (U/D/R/L)	80/80/85/85	89/89/89/89	89/89/89/89
Touch Screen	Projective capacitive sensor		
I/O			
IP69K I/O Ports (M12 stainless connectors)	2x USB 2.0 2x GbE LAN 2x COM ports, RS232/422/485 1x AC power input		
Integrated I/O Ports (optional Pipe Mount model)	1x USB 2.0, Type A 1x USB 3.0, Type A 2x GbE LAN, RJ-45 2x COM ports, RS-232/422/485 1x DisplayPort 1x AC power input		
Expansion	1x Mini PCIe card with PCIe and USB interface		
Wi-Fi and Bluetooth	802.11 a/b/g/n/ac and BT 4.0 (optional with Mini PCIe card)		
Mechanical			
Construction	Stainless Steel 316L (V4A)		
Weight	8 kg	12.0 kg	12.8 kg
Dimensions (H x W x D)	419 x 268 x 59.3 mm	561 x 353 x 67.4 mm	610 x 379 x 67.3 mm
Mounting	VESA mount, MIS-D 75/100 mm or pipe mount		
Environmental			
Operating Temperature	0°C to 45°C	0°C to 45°C	0°C to 45°C
Storage Temperature	-20°C to 60°C	-20°C to 60°C	-20°C to 60°C
Operating Humidity	10% to 90% @ 40°C (non-condensing)		
Vibration	Operating: 1G random 5 to 500Hz		
Shock	Operating: 10G acceleration part to part, 11 ms		
IP Rating	IP69K sealed		
Certifications & Compliance	CE/FCC EN 55032/24, Part 15B EN61000-6-2/-4 (EN55011) UL/CB (62368) + CB (60950)		
Input Voltage	100-240 VAC (100 W AC-DC PSU)		
Power Consumption	35W	40W	48W
Software			
Operating System	Windows® 10 IoT Enterprise		