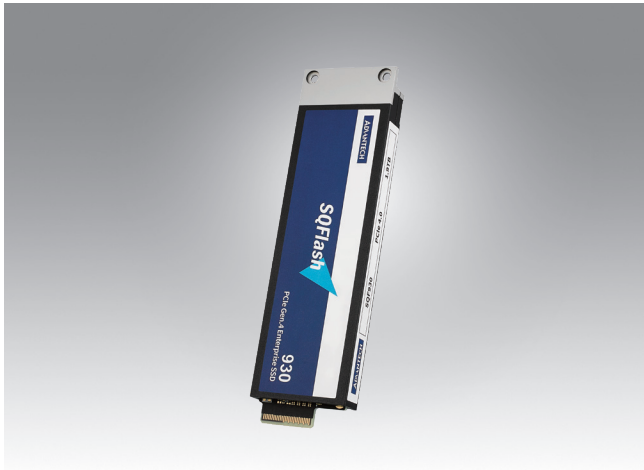


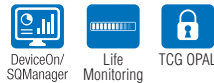
SQF-CE1 930L-D

PCIe Gen.4 x4 E1.S SSD



Features

- EDSFF E1.S (9.5mm)
- Compliant with NVMe 1.4
- AES-256 Support & TCG-OPAL Compliant
- Supports LDPC & RAID ECC
- Large capacity up to 3.8TB
- Hot plug support



Specifications

Connect Type	EDSFF E1.S
Flash type	3D eTLC
Capacity	480GB ~ 3.8TB
Transfer Mode	PCIe Gen.4 x4
Max. Power Consumption	Read: 13.5 W, Write: 12 W
Sustained R/W Performance (*)	up to 6,800/ 2,000 MB/sec
Operating Temperature	Commercial grade: 0 to +70 °C
Shock Resistance	1,500 G, peak / 0.5 ms
Vibration Resistance	20 G, peak / 80 ~ 2000 Hz
Dimensions (mm)	118.75 x 33.75 x 9.5

(*) These values are for reference only; they may change according to the flash memory used.

Ordering Information

PN	Description
SQF-CE1E4-480GDEEC	SQF PCIe/NVMe E1.S SSD 930L-D 480G 3D eTLC BiCS5 DWPD=1 (0~70°C)
SQF-CE1E4-960GDEEC	SQF PCIe/NVMe E1.S SSD 930L-D 960G 3D eTLC BiCS5 DWPD=1 (0~70°C)
SQF-CE1E8-1K9GDEEC	SQF PCIe/NVMe E1.S SSD 930L-D 1920G 3D eTLC BiCS5 DWPD=1 (0~70°C)
SQF-CE1E8-3K8GDEEC	SQF PCIe/NVMe E1.S SSD 930L-D 3840G 3D eTLC BiCS5 DWPD=1 (0~70°C)